


Magic Mirror Touchscreen Calibration (version 3.0)



What should I do if the touch screen is not accurate / over sensitive?

1. **Exit** all Magic Mirror modules that are currently running.
2. Go back to desktop and select **Calibration**  shortcut.
3. Touchscreen calibration page will be shown.
4. Tap on all the “+” accordingly and hold for **2 seconds** on each “+” until it becomes “✓”.

Note:

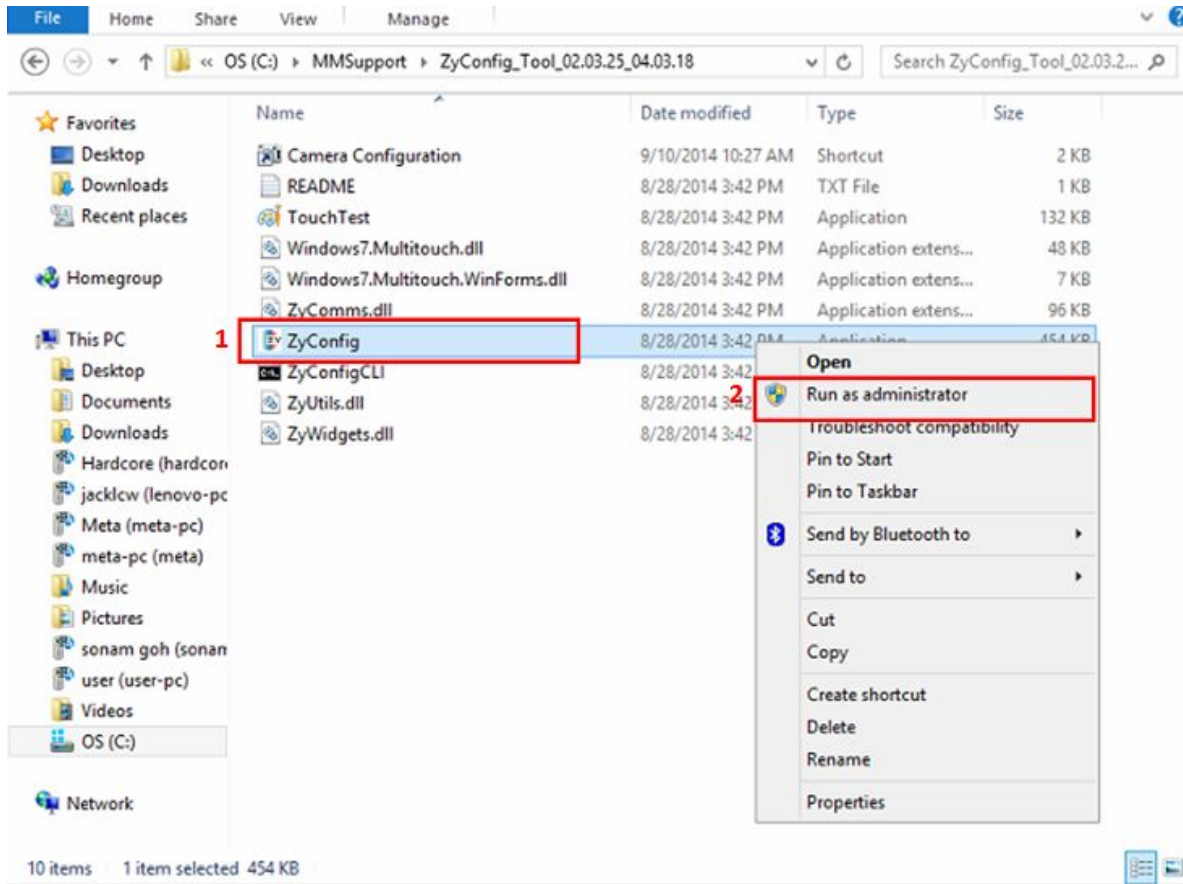
Crosses appear one by one.

5. Click on **Confirm** button.

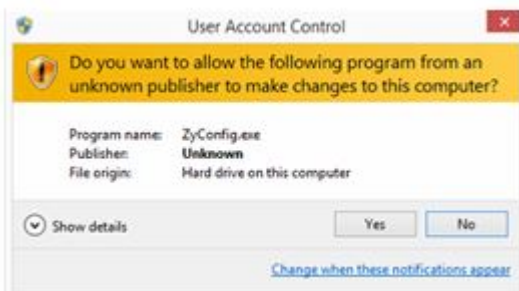
Magic Mirror Touchscreen Calibration (version 4.0)

What should I do if the touch screen is not accurate / over sensitive?

1. Exit all Magic Mirror modules that are currently running and go back to desktop.
2. Go to **C:\MMSupport\ZyConfig_Tool**.
3. Select **ZyConfig**.
4. Right click and select **Run as administrator**.



5. Click **Yes** if this prompt up.

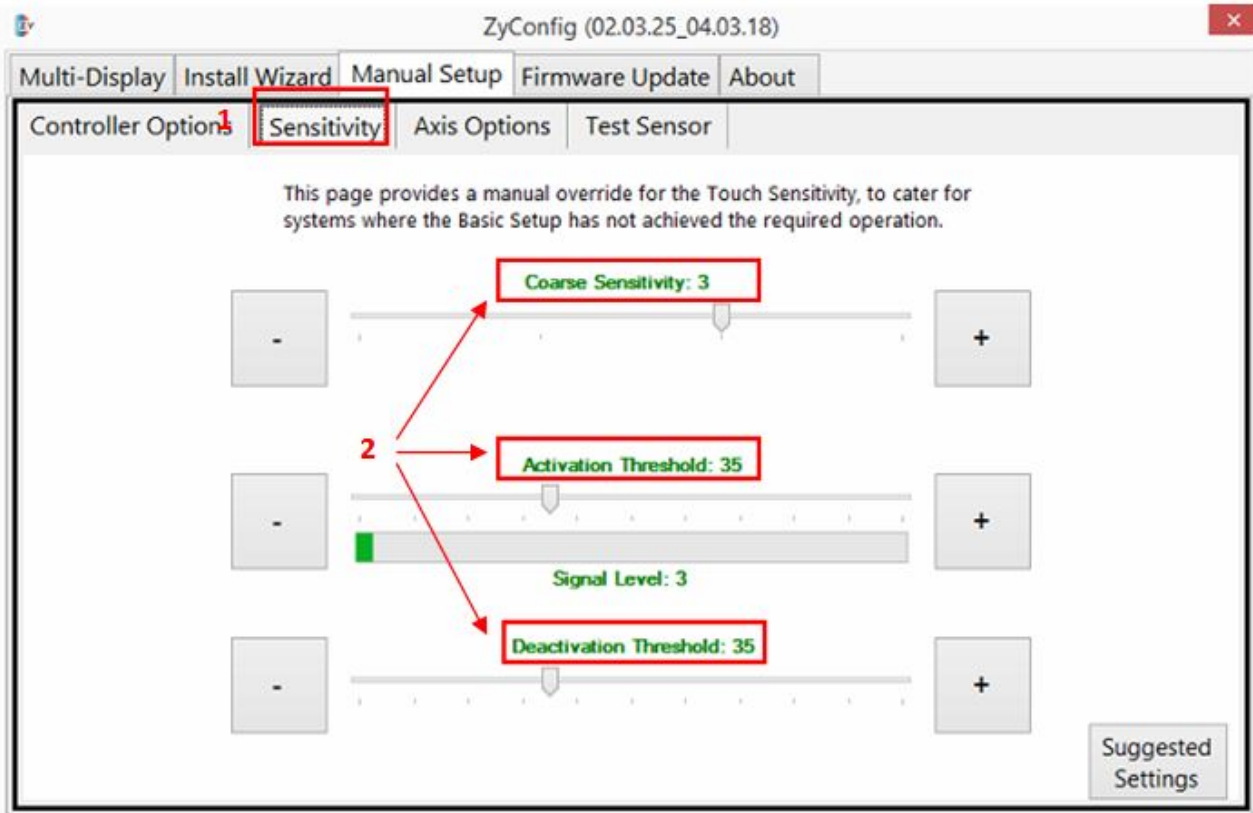


6. Go to **Manual Setup**, select **Controller Options**.

Note:

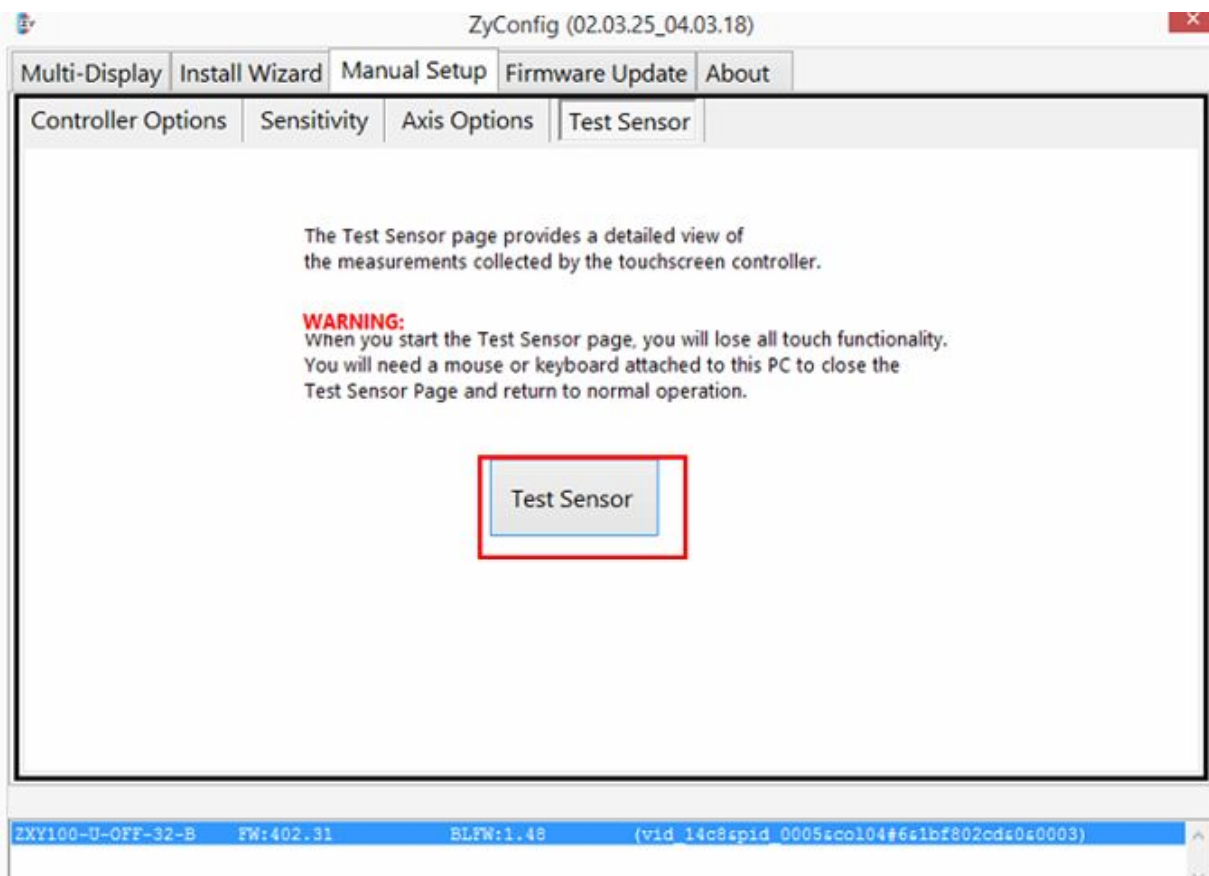
Please make sure the **Number of Touches** is 1.

7. On **Manual Setup**, select **Sensitivity**.
8. The best setting is
Coarse Sensitivity: 3
Activation Threshold: 35
Deactivation Threshold: 35

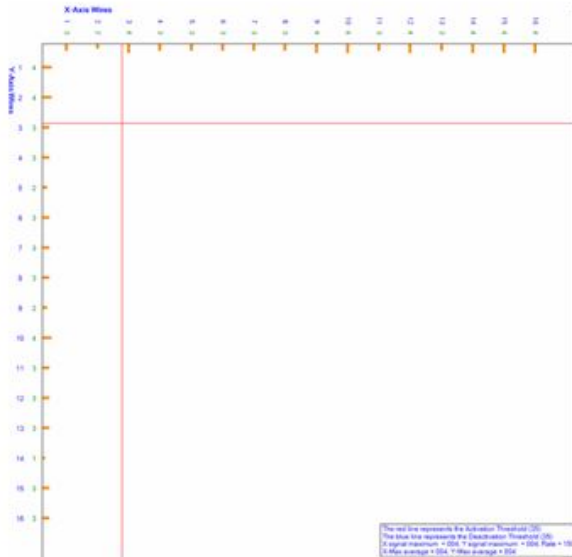


9. Go to **Manual Setup**, select **Test Sensor**.

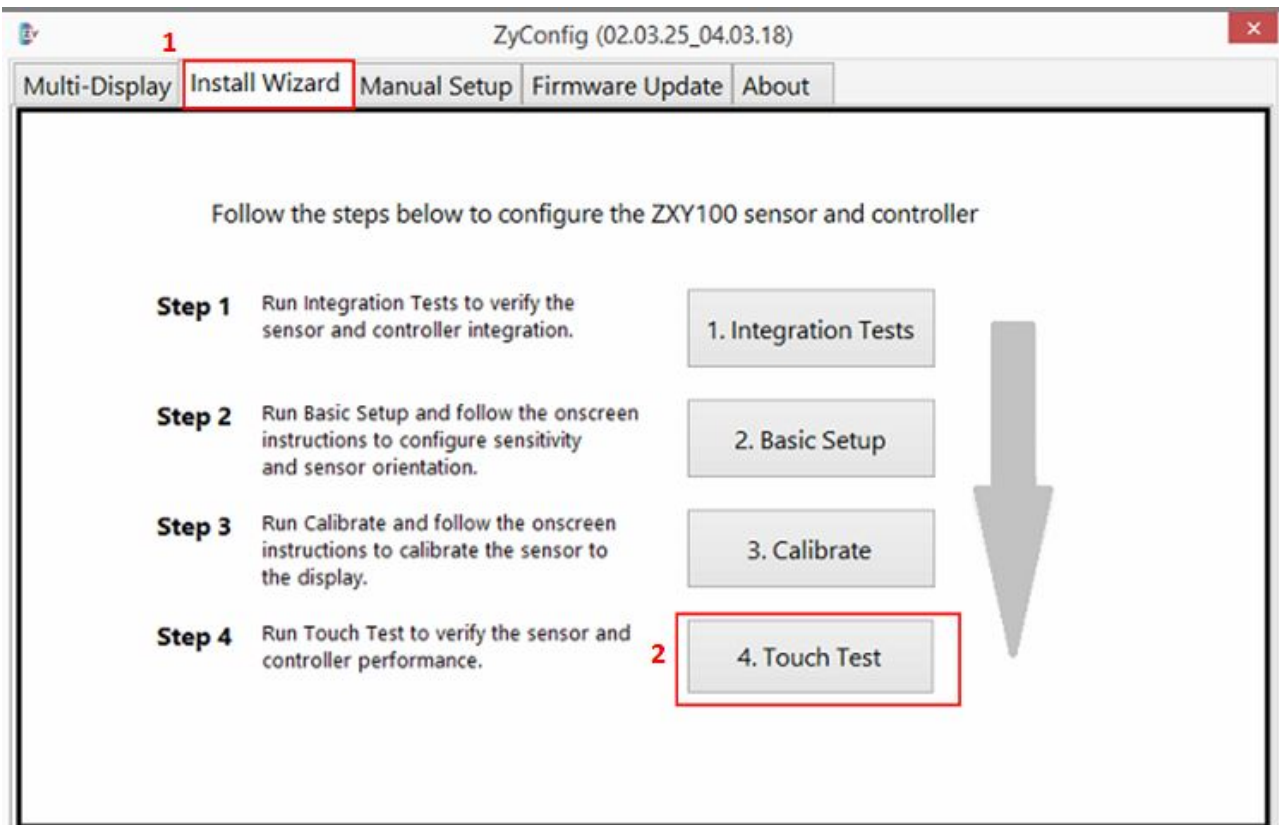
You can test whether it's touch screen hardware or software which affects the sensitivity.



10. **Touch** the screen here and there to make sure all the lines are detecting your action (to make sure that every signal is working).



11. If the lines are **not responding** to your action, it means that the **touch glass, mirror film, or touch screen hardware** are affecting the sensitivity. Please call or email support@magicmirror.me for further assistance.
12. Press **Esc** on keyboard to exit.
13. If everything is fine, please go to **Install Wizard** and select **Touch Test**.
14. You can test whether it is inverted or not stable.
15. Press **Esc** on keyboard to exit.



16. If it is inverted, go to **Manual Setup**, select **Axis Options**.

