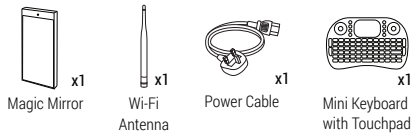


Quick Startup Guide

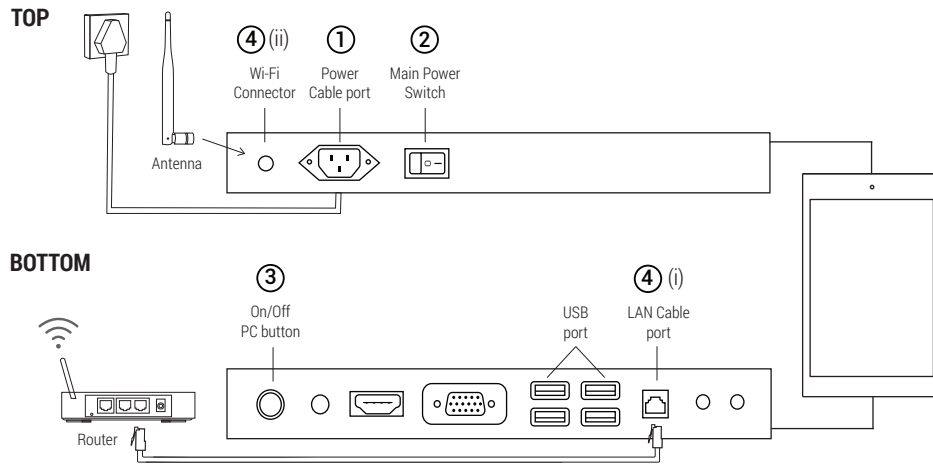
What's In The Box



Needs to be Available Onsite

- 1x spare main power socket (100-240V)
- Strong and stable internet connection:
 - Option 1: Connect to LAN
(Requires 1x LAN cable, 1x free port on network router)
 - Option 2: Connect via Wi-Fi
 - Option 3: Connect via mobile broadband

Part 1 Power Up and Connect to Internet



1 CONNECT TO POWER

Connect the power cable to power socket and make sure it's turned on.

2 SWITCH ON MAIN POWER

Ensure it is switched on (I)
 I : ON
 O : OFF

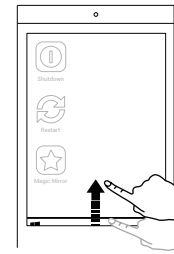
3 TURN ON PC SWITCH

Press the power (green button) briefly to turn on your Magic Mirror.

4 CONNECT TO INTERNET

(i) Screw-in and point Wi-Fi antenna upwards.
 (ii) Connect the LAN cable to the router.

Part 2 Operations



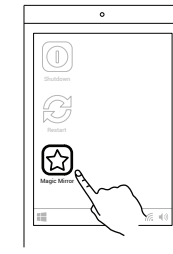
A. QUICK START TASKBAR

- Slide Upwards to show the taskbar



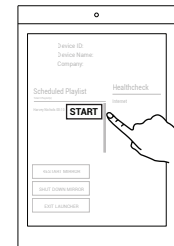
B. BASIC SETTINGS

- Connect to Wi-Fi
- Adjust Volume



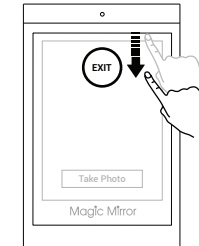
C. START APP LAUNCHER

- Click on "MagicLauncher" icon to start Magic Mirror OS™ software.



D. SELECT PLAYLIST

- Select by clicking "Start".
- Assets should start downloading automatically.



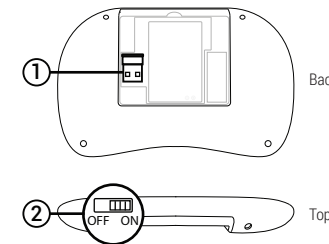
E. EXIT PLAYLIST

- Slide downwards to Exit.
- Enter Alt-F4 on keyboard to Exit App.



F. RETURN TO DESKTOP SCREEN

- Click "Exit Launcher".
- Default password is "mm".



G. CONNECT KEYBOARD

- Plug the USB dangle from keyboard to Magic Mirror USB port
- Turn on the Keyboard slider

FOR MORE INFORMATION, PLEASE REFER TO:



Magic Mirror 24™
 Datasheet



Support Videos Playlist
 Email : support@magicmirror.me
 Tel : +44 (0)1344 988 687